

Characteristics of Protists:

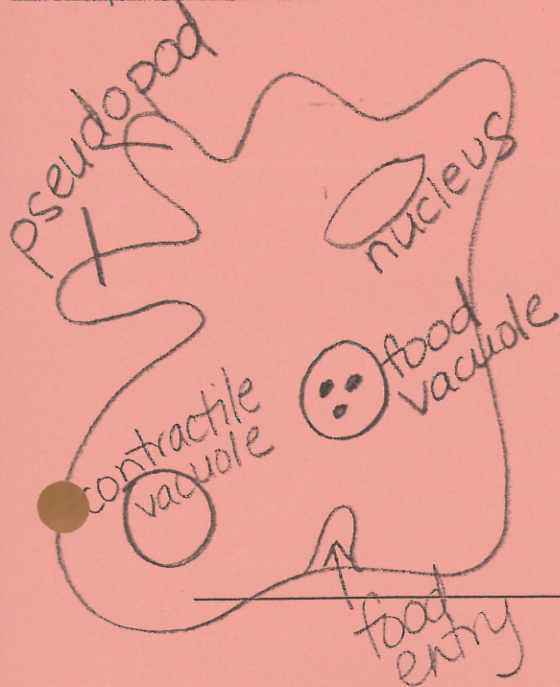
- Protists can be _____ or _____.
- Protists live in _____ or _____ surroundings.
- Protists are _____.
- Protists reproduce _____ and _____.

Protists can be classified by _____ shared with other _____ or how they obtain _____.

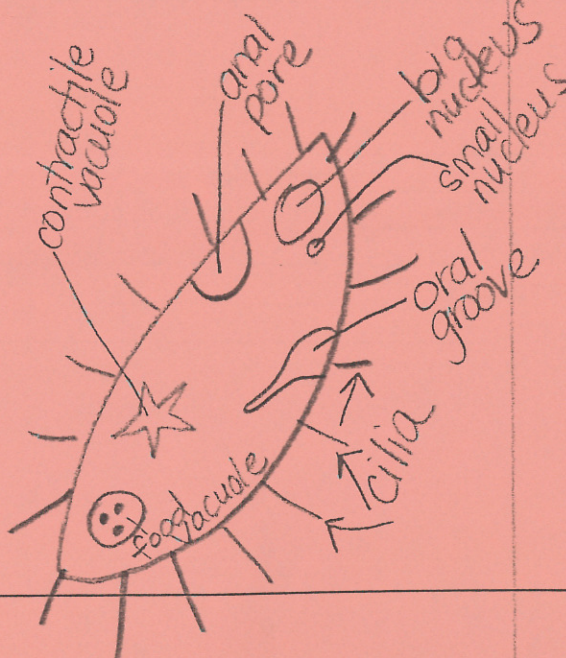
Protist Type	Animal-like	Plant-like	Fungus-like
Can it move?			
How many cells?			
How does it obtain energy?			
Examples			
Nicknames			
Interesting Facts			

Protozoan Pictures with Labels:

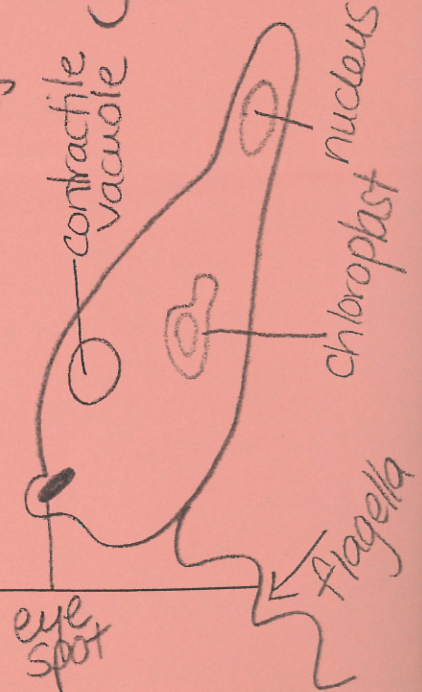
Amoeba



Paramecium



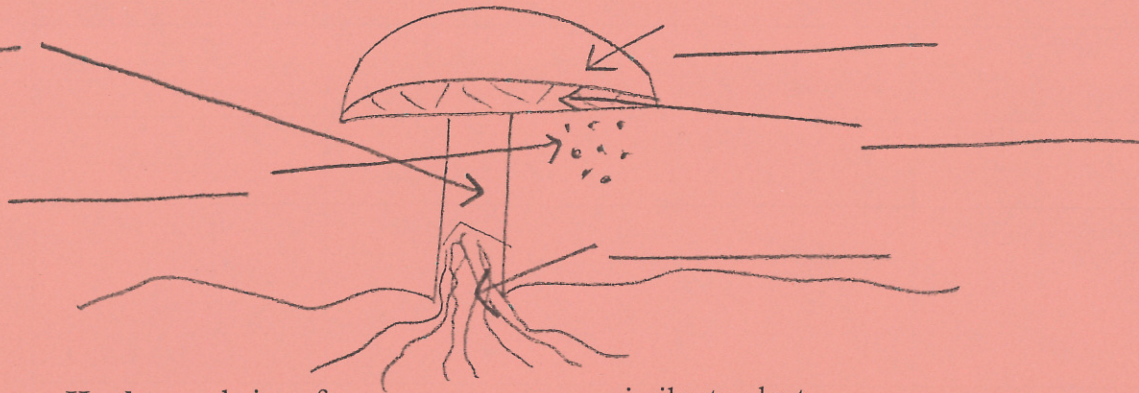
Euglena



Characteristics of Fungi:

- Fungi grow best in _____ and _____ areas.
- Most are _____, but yeast is _____.
- Fungi have _____ and thick _____ made of _____.
- Fungi are similar to plants, but lack specialized _____ and _____ such as _____ and _____.
- Fungi can be _____ or _____.

Label the mushroom:



Hyphae = chains of _____ similar to plant _____

Reproduction:

- Fungi reproduce with _____, which can be produced _____ or _____.
- A spore is a waterproof _____ cell that can grow into a new _____ released into the _____ and spread by the _____.
- Yeasts reproduce asexually through _____ = new _____ grows out of a body on the _____ (much like a bud on a tree)

Fungi are classified into _____ groups based on its _____ and how it _____.

Fungal Importance:

1. _____
2. _____ -- penicillin
3. Cause _____ -- athlete's foot, corn smut, wheat rust, Dutch elm
4. Lichen – fungus + _____ or _____
 - **Pioneer species** – 1st _____ to appear after weather disruption
 - Indicator of _____